



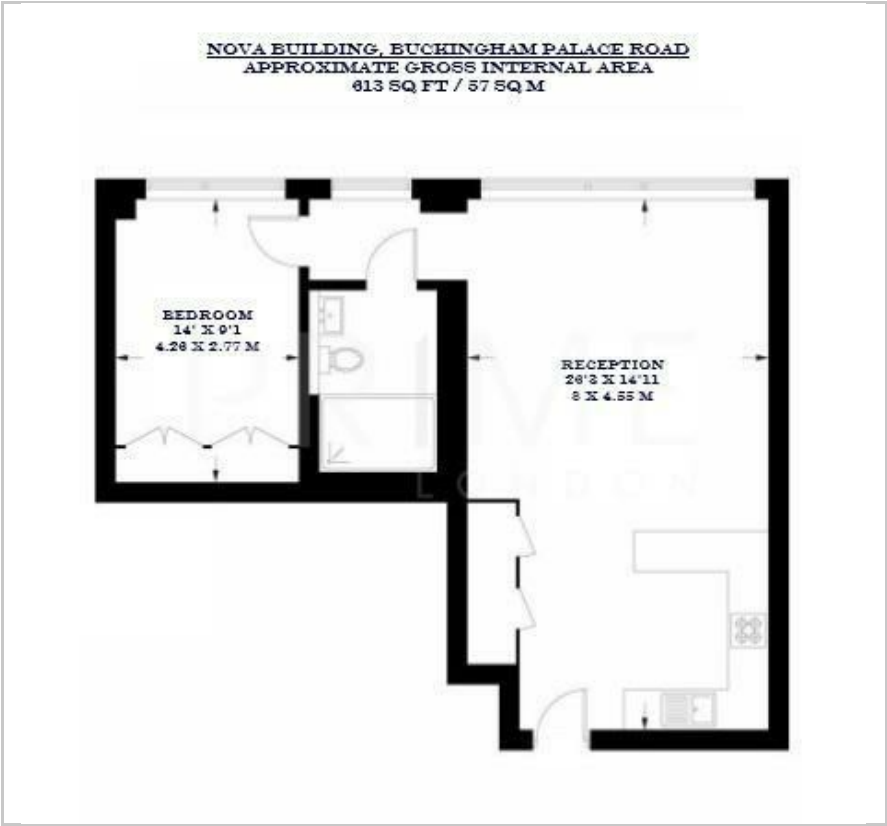
Nova Building

75 Buckingham Palace Road, Victoria, SW1W 0AJ

Asking Price £1,100,000



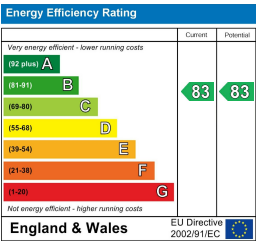
Floor Plan



Area Map



Energy Efficiency Graph



Viewing

By appointment. Contact us on 0207 052 1075 if you wish to arrange a viewing appointment for this property, or require further information.

- One bedroom apartment
- 613 sq ft (57 sqm)
- Floor to ceiling windows
- Residents' gym, cinema room, lounge and roof garden
- Stone's throw away from Victoria Station
- 24 hour concierge



This elegant one bedroom apartment, positioned within the sought after Nova Building development, is available for chain free sale through Prime London.

The property offers 613 sq ft (57 sqm) of living space, and features a bright open plan reception and dining area with floor to ceiling windows. The contemporary kitchen is fully fitted and finished to a high standard, and the generously sized double bedroom includes bespoke built in wardrobes.

Residents of Nova Building enjoy an exceptional selection of amenities, including a 24 hour concierge service, a roof garden, private cinema, meeting room, and a fully equipped gym.

Perfectly situated on Buckingham Palace Road, the development sits moments from Victoria's underground and mainline stations, providing superb transport connections.



These particulars, whilst believed to be accurate are set out as a general outline only for guidance and do not constitute any part of an offer or contract. Intending purchasers should not rely on them as statements of representation of fact, but must satisfy themselves by inspection or otherwise as to their accuracy. No person in this firms employment has the authority to make or give any representation or warranty in respect of the property.